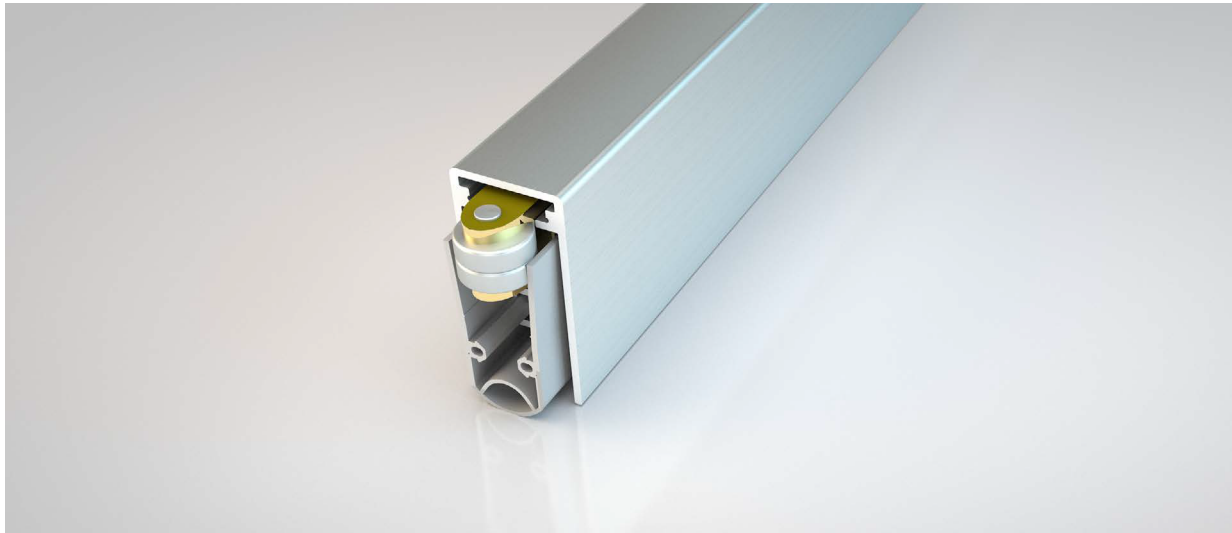


NOR880

NORSOUND



Application

Bottom edge of acoustic timber doorsets with a pivot hinge. Suitable for double swing pivot doors

Fixing

Rebated, held in place with angle brackets

Performance

Smoke tested in accordance with BS 476-31.1
Acoustically tested in accordance with BS EN ISO 10140-2

Material

Aluminium, Silicone gasket

Standard lengths (mm)

708, 833, 958, 1083, 1208

Minimum / Maximum length (mm)

235 / 2000

Cutback (mm) / Maximum gap coverage (mm)

125 / 20

Actuation

Single

Colour

Mill finish, Grey gasket

Dimensions



Order codes

NOR880 + Length eg. **NOR880708** (708mm)

 5 Regents Drive
Prudhoe
Northumberland
NE42 6PX

 norseal.co.uk  sales@norseal.co.uk  01661 830088

Registered in Companies House Cardiff No. 04317595 VAT Reg. No. 733 9466 08